

Galigeo Announces New Version Release of Webigeo v11 Location Analytics software

New York, January 4th - Location intelligence software provider Galigeo is proud to announce the release of its new location intelligence software, Webigeo. This new version's advanced queries, enhanced viewing functionality, and optimized performance make Webigeo a powerful tool for data analysis and decision making.

By combining geographical dimensions with existing data from business intelligence applications, Webigeo's location intelligence software helps companies gain critical insights from existing company data. "In an economic context where companies are increasingly subject to performance pressure Webigeo is a real asset which allows key players to understand and interpret business data and ease the decision making process", explain Christian Tapia-Stocker CEO of Galigeo.

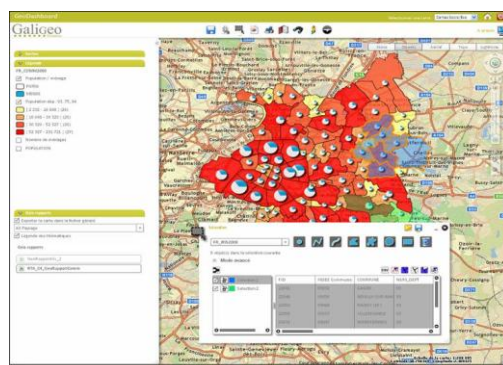
Webigeo

Webigeo as a "Business intelligence-centric" module connects Business Intelligence (BI) to the Geographic Information System (GIS). Webigeo has all the tools to plot data directly to a map from Business Intelligence solutions. Webigeo enhances existing BI solutions such as SAPBusinessObjects Xi, IBM Cognos C8, Microsoft, and Oracle.

By harnessing information already within Business Intelligence (BI), Webigeo is able to expose trends and relationships from a geographic perspective. Whereas existing BI systems might already manage, analyze, and visualize large amounts of business data, they do not add the "where" factor into their analysis. With Webigeo, users can uncover hidden trends, dependencies, and patterns that would have otherwise gone undetected in traditional enterprise applications.

Version 11 Key Features:

- **Semantic Queries**
Create your own expressions and query databases
- **Personal Data**
Import and visualize your personal data
- **Advanced Visualization**
Access advanced visualization (heat map point clustering, temporal mapping)
- **New Graphical Interface**
Customizable graphic charter aptly suits users' needs



Overview of the Advanced Visualization

####

About Galigeo: Since 2001, Galigeo has been paving the way in location intelligence. By combining geographic data with other business data residing in business intelligence applications, Galigeo enables organizations to gain critical insights, make better decisions, optimize business processes, and enhance existing enterprise applications.

Galigeo's innovative location intelligence solutions and unique expertise have helped companies improve in the areas of Sales Territory Management, Trade Areas Analysis, Resource Allocation, and Network Monitoring. Some of the world's largest companies and governmental organizations in the world have trusted Galigeo for their location intelligence solutions. Galigeo is used by more than 50,000 users in Europe and in the United States.



For more information about Galigeo, please visit www.galigeo.com or call 917-267-7675.

<p>Contact: Zoe Fournier Galigeo 116 West 23rd Street, Suite 500 New York, NY 10011</p>	<p>Telephone: 917-267-7675 Email: zfournier@galigeo.com URL: http://www.galigeo.com</p>
--	--